

How To Get Started. It's Easy!

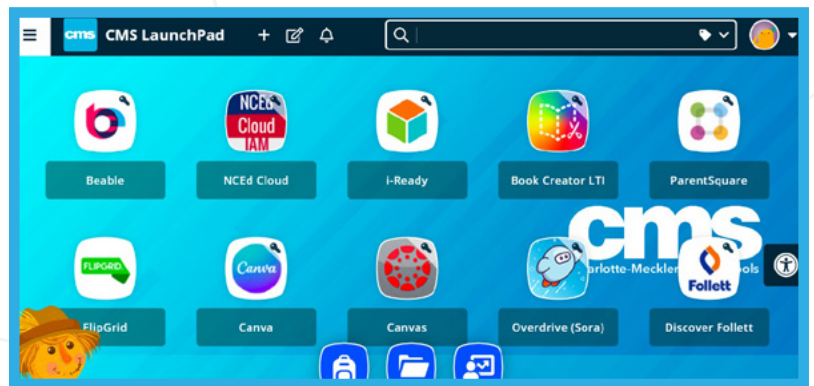
1

Log into Beable using the instructions provided by your teacher. You can write your login information here.

URL: _____

Username: _____

Password: _____



2

First, you'll take a quick survey that gives us a sense of what you know about the topics that will be covered in Beable. That survey will show up on the right side of the screen. It should take you about 5-10 minutes to finish. You'll probably get a lot of the questions wrong since it's information you haven't learned about yet, and that's ok!

A Lexile score is _____.

A measure of how many books I have read

A measure of how many words I know

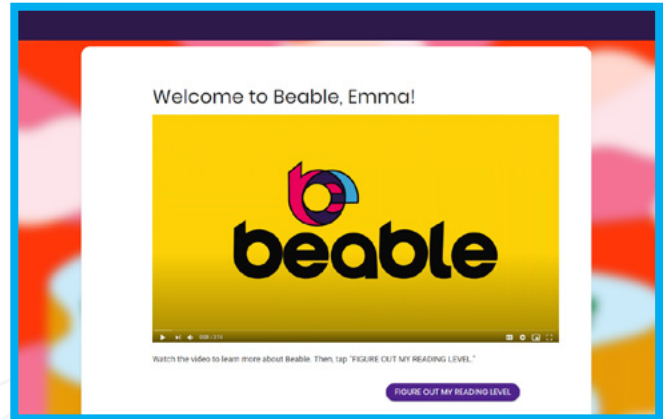
A measure of how long I have been reading

A measure of how well I read

Next

3

Next, you'll watch a video about Beable



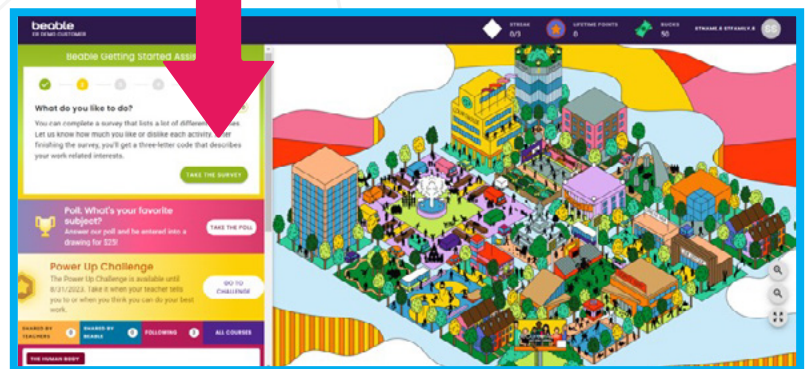
4

Tap the *continue* button to take your reading test. You will have to do this only once in your life as a Beable student so give it your best effort! Be sure your room is quiet, and you can concentrate. Read carefully and think about each answer choice before selecting one. If you can't finish the test, you can log out and come back to finish it later. When you are finished, you'll see your Lexile reading level.

Continue

5

Now, a Beable Getting Started Assistant will show on the top left side of your home page. You've already completed the first step – the initial survey and reading test. Good work! Now, tap on the Take the Survey button to answer questions to help identify your interests and find out your RIASEC code. Beable uses your code to suggest careers that match your strengths.



6

When you are done, tap *Explore Careers* in the Beable Getting Started Assistant to choose up to three careers that match your interests. Later, you can click on the Career Fair building on the community map to edit your choices and explore more careers.



EXPLORE CAREERS

7

Next, tap the *Follow Topics* button in the Beable Getting Started Assistant to tell Beable what you like to read, and we'll send you articles on those topics.

FOLLOW TOPICS

8

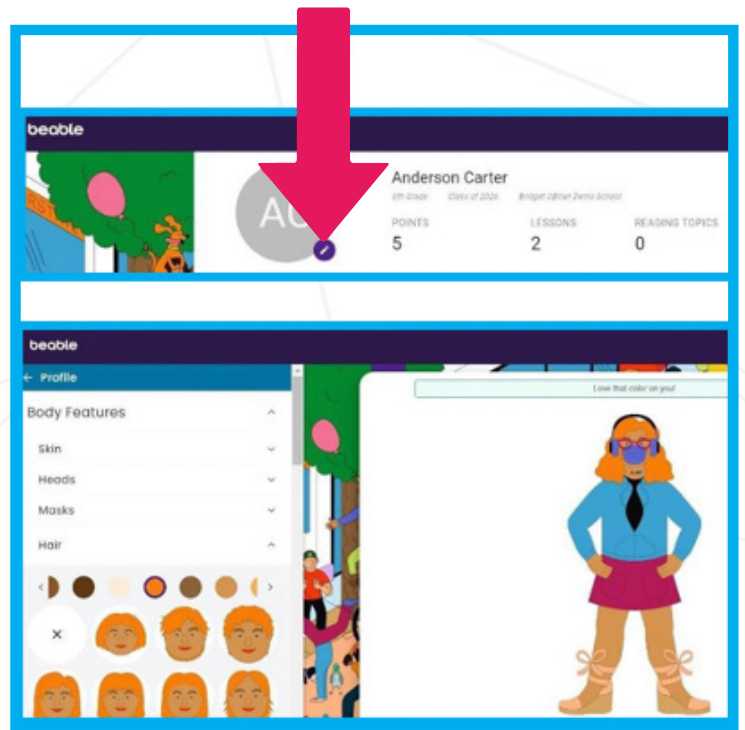
Then, tap *Tell us Your Interests* in the Beable Getting Started Assistant to tell Beable more about what you like! Later, you can click on your name in the top corner and choose Profile, or the statue in the middle of the community map, to change any of your choices.



TELL US YOUR INTERESTS

9

Now, create your own unique avatar by tapping your name in the top right corner and choosing Profile. Then tap the pencil next to your initials. When you're finished, you'll see that the statue in the middle of the community map becomes your avatar!



Have fun!

We are proud to be able to help you reach your life goals!

